

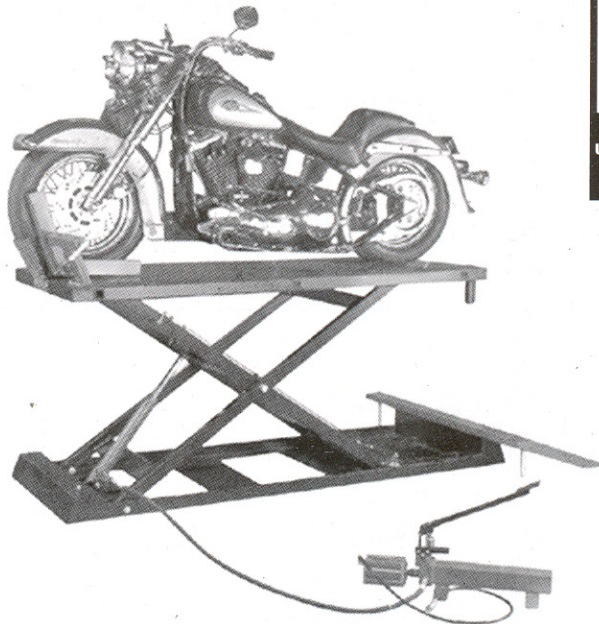


Forward this manual to all operators.  
Failure to operate this equipment as  
directed may cause injury or death.

## OPERATION MANUAL / PARTS LIST

**Model**  
**RML-750HD**

ATV / MOTORCYCLE LIFT



### READ FIRST



Do not operate this machine  
until you read and understand  
all the dangers, warnings  
and cautions in this manual.

#### SHIPPING DAMAGE CLAIMS

When this equipment is shipped, title passes to the purchaser upon receipt from the carrier. Consequently, claims for the material damaged in shipment must be made by the purchaser against the transportation company at the time shipment is received.

#### BE SAFE

This tool was designed and built with safety in mind. However, your overall safety can be increased by proper training and thoughtful operation on the part of the operator. **DO NOT** operate or repair this tool without reading this manual and the important safety instructions shown inside. Keep this operation manual near the tool at all times. Make sure that **ALL USERS** read this manual.



1645 Lemonwood Dr.  
Santa Paula, CA. 93060, USA  
Tel: 1-805-933-9970  
Fax: 1-805-933-9160

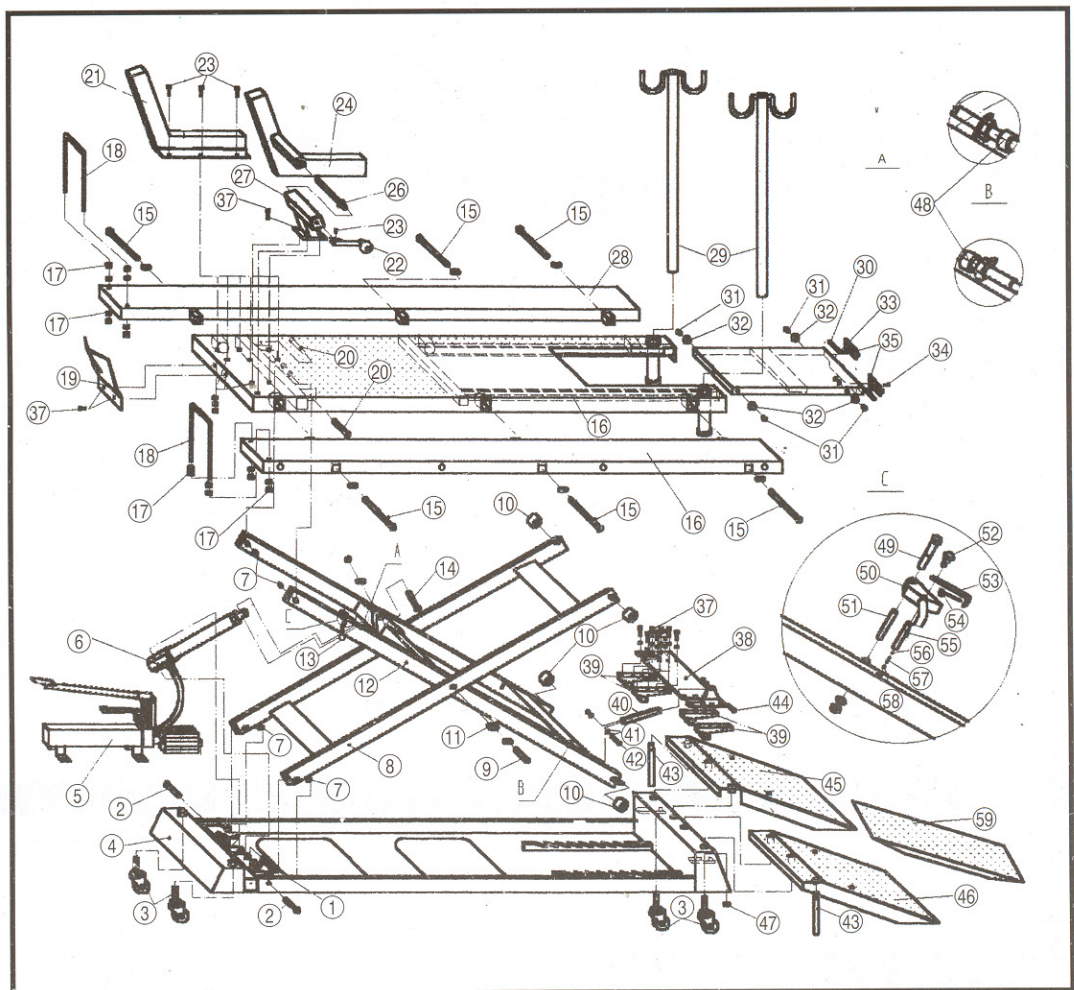
## WARNINGS

1. Carefully center load on the lift.
2. Do NOT exceed the rated capacity of the lift - 1,500lbs Maximum Capacity.
3. Keep all extremities (hands, feet, etc) away from the lift. Do NOT reach beneath lift.
4. Do NOT put any tools or other equipment beneath the lift.
5. Do NOT get on the lift while it is elevated.
6. Do NOT ride vehicle onto the lift.
7. When moving the lift, it must be in the lowered position.
8. Do NOT use this equipment/lift without first reading and understanding all instructions, precautions and warnings. Failure to do so may result in injury and/or property damage.
9. Working area MUST be clean, clutter-free and well lit.
10. Foot controller should be as far away from the lift as possible when lowering or raising the lift.
11. Recommended for indoor use.
12. Do NOT wear loose or ill fitting clothing while operating the lift. Long hair must be secured.

## PARTS LIST

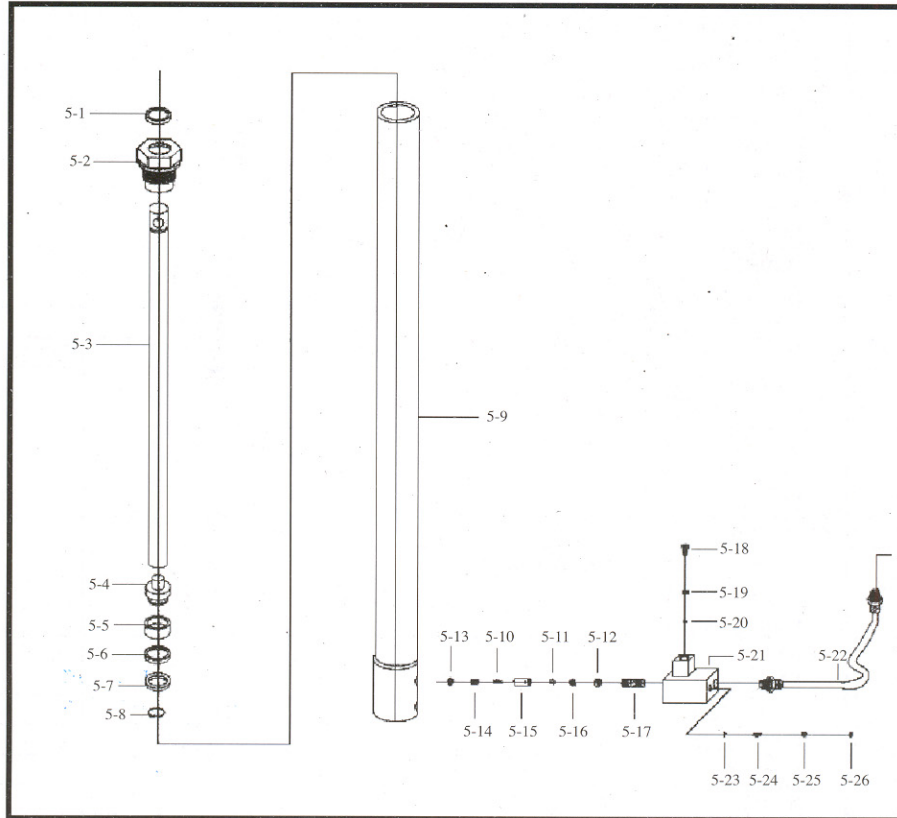
Please make sure to confirm that all parts are included.

Figure 1

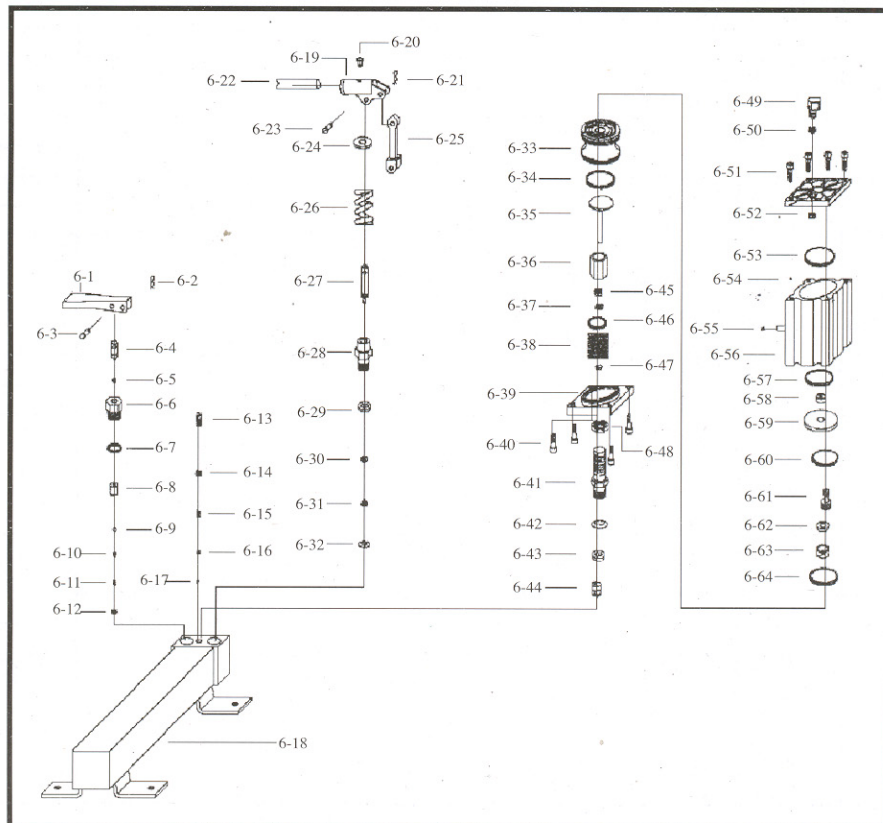


Part Number	Description	Quantity
1	M16x110 Bolt, Nut & Washer	1
2	M14x80 Bolt, Nut & Washer	2
3	2" Caster	4
4	Base Assembly	1
5	Hydraulic Jack	1
6	Pneumatic/Hydraulic Pump (see page 5 or 7 for image)	1
7	Bearing 1520	8
8	Link Rod 1	1
9	M20x120 Bolt, Nylon Nut & Washer	2
10	Wheel	4
11	Bearing 2020	8
12	Link Rod 2	1
13	Ball Handle	1
14	M16x70 Bolt, Nut & Washer	1
15	M16x370 Bolt & Washer	6
16	Shoulder-Right	1
17	M12 Nut & Washer	8
18	U-Bolt	2
19	U-Bolt	1
20	M14x80 Bolt, Nut & Washer	2
21	Fixed Clamp	1
22	Handle Ass'y	1
23	Rivet	1
24	Movable Clamp	1
26	Screw Rod	1
27	Support Braket	1
28	Shoulder-Left	1
29	Stand	2
30	Lock Pin	2
31	M8 Bolt, Nut & washer	4
32	Nylon Wheel	4
33	Deck Plate (Movable)	1
34	Rivet ø4	8
35	Shutter	2
36	Deck Plate (Main)	1
37	M8x20 Bolt & Washer	27
38	Safety Plate	1
39	Safety Block	4
40	Link Rod	1
41	M8 Washer	2
42	M8x20 Bolt, Nut & Washer	1
43	Ramp Stand	2
44	M8x25 Bolt, Nut & Washer	1
45	Ramp-Left	1
46	Ramp-Right	1
47	Snap Ring ø14	4
48	M8x25 Bolt & Nut	2
49	M8x70 Bolt, Nut & Washer	1
50	Release Handle	1
51	Copper Ring	1
52	M6 Bolt	1
53	Cable Link Plate	1
54	Release Cable	1
55	Guide Ring	1
56	Rod	1
57	Spring	1
58	M12x12 Bolt	1
59	Center Ramp	1

## Assembly # 5 Hydraulic Jack



## Assembly # 6 Pneumatic/Hydraulic Pump



Hydraulic Ram Ass'y Part List (5#)

Part No.	Desc.	Q'ty
5-1	Dust Seal	1
5-2	Nut	1
5-3	Ram	1
5-4	Piston Head	1
5-5	Guide Ring	1
5-6	Y-Ring	1
5-7	Washer	1
5-8	Snap-Ring	1
5-9	Cylinder	1
5-10	Speed Control Spring	1
5-11	Screw	1
5-12	Screw	1
5-13	Upper Washer	1
5-14	Speed Control Valve	1
5-15	Valve Cover	1
5-16	Bottom Washer	1
5-17	Pipe Connector	1
5-18	Bolt	1
5-19	O-Ring	1
5-20	O-Ring Retainer	1
5-21	Valve Body	1
5-22	Oil Hose	1
5-23	Steel Ball	1
5-24	Spring	1
5-25	Steel Ball	1
5-26	Screw	1

Pneumatic/Hydraulic Pump Ass's (6#)

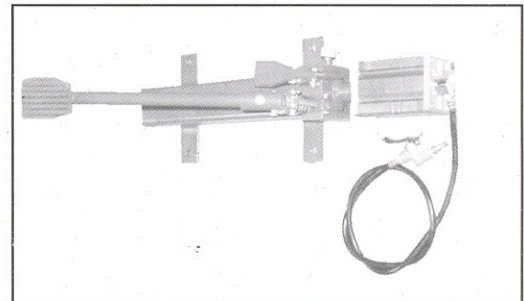
Part No.	Desc.	Q'ty
6-1	Release Pedal	1
6-2	Hair Pin	2
6-3	Pin	2
6-4	Release Valve	1
6-5	O-Ring	1
6-6	Cylinder	1
6-7	O-Ring	1
6-8	One-Way Valve Ass'y	1
6-9	Steel Ball	1
6-10	Rod	1
6-11	Spring	1
6-12	Screw	1
6-13	Adjustable Valve	1
6-14	O-ring	1
6-15	Spring	1
6-16	Rod	1
6-17	Steel Ball	1
6-18	Oil Tank	1
6-19	Handle Scket	1
6-20	Bolt M8x25	1
6-21	Hair Pin	3
6-22	Foot Pedal	1
6-23	Pin 8x25	4
6-24	Spring Cover	1
6-25	Link	1
6-26	Spring	1

Part No.	Desc.	Q'ty
6-27	Plunger	1
6-28	Pump Cylinder	1
6-29	O-Ring	1
6-30	O-Ring	1
6-31	YX Seal Ring	1
6-32	Copper Washer	1
6-33	Big Piston	1
6-34	O-Ring	1
6-35	Plunger	1
6-36	Air Plunger's Nut	1
6-37	YX Seal Ring	1
6-38	Big Spring	1
6-39	Bottom Cover	1
6-40	Bolt M8x20	8
6-41	Pump Cylinder	1
6-42	Washer	1
6-43	O-Ring	1
6-44	Valve Ass'y	1
6-45	Guide Ring	1
6-46	Lock Washer	1
6-47	Silencer	4
6-48	He Nut	1
6-49	Connector	1
6-50	O-Ring	1
6-51	Top Cover	1
6-52	Retainer	1

Part No.	Desc.	Q'ty
6-53	O-Ring	1
6-54	Steel Ball	1
6-55	Screw M5x10	1
6-56	Air Cylinder	2
6-57	Suap Ring	1
6-58	Seal Ring	1
6-59	Small Piston's Cover	1
6-60	O-Ring	1
6-61	Small Piston	1
6-62	YX Seal Ring	1
6-63	Copper Pipe	1
6-64	O-Ring	1

## ASSEMBLY

1. Unpack the workstation making sure that all of the parts have been included.
2. Remove workstation from delivery pallet and place on concrete floor.
3. Take end of black hydraulic hose and attach to pneumatic/hydraulic pump (6).
4. Raise the workstation with pump pedal. Note: If workstation is not rising level check to make sure that wheels (10) are in their tracks.
5. Use the provided Allen wrench. Place in top of caster (3) and turn it clock-wise. Raise lift until it rolls freely. Raise all four casters.
6. Take shoulder (16) and slide inserts into deck plate (36). Next take three bolts (15) and bolt the shoulder (16) to the deck plate (36). Follow same step and bolt on the other shoulder (28).



#6 Pneumatic/Hydraulic Pump

7. Take ramp stands (43) and screw into bottom ramps (46) and (45). Next place ramps over matching holes on end of working station.
8. Take u-bolts (18 ) and install in ends of shoulders. Attach with nuts and washers (17).
9. Take fixed clamp (21) and bolt to deck plate (36) using bolts, nuts, and washers (23).
10. Take the suport bracket (27) and bolt them to the desk plate using bolts and lock-washers (37).
11. Place screw rod (26) and handles (22) into grooves of support bracket (27).
12. Place stands (29) on holes located on the end of the deck plate (36).
13. For three wheeled ATV's remove clamp (24) and install u- bolt (18 & 19) to deck plate (36).
14. If you have access to compressed air, attach air nozzle to compressed air hose and raise workstation by pressing lever on air nozzle. Requires 70-160PSI.

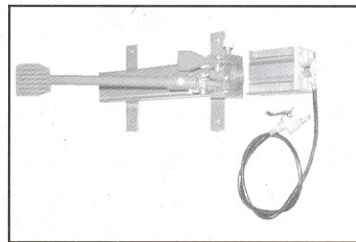
Note: The stands (29) are for holding up a motorcycle with rear wheel removed. (Straps not provided but should be used).

Note: Deck plate (33) can be moved for easy back wheel removal.

## **OPERATION**

1. Roll motorcycle onto deck plate (36) until wheel is inside clamp (21 & 24).

2. Use screw rod (26) and handles (22) to tighten the clamp (24) while holding front wheel steady.
3. To raise deck plate manually, pump foot pedal until you reach the height you want.
4. **WARNING:** Do not raise the deck plate higher than the warning arrows on side of base assembly (4) indicate.
5. To use compressed air, use airline trigger until you reach the height you want.
6. **IMPORTANT:** After reaching the height you want, move ball handle (13) all the way to the right, for your safety.
7. When finished working move ball handle (13) all the way to the left. And then step on small red pedal on pneumatic/hydraulic pump (6) to lower workstation.



#6 Pneumatic/Hydraulic Pump

**SAFETY WARNING:** Ball handle (13) should be moved all the way to the right when station is up so that station cannot come down. To lower station move ball handle (13) all the way to the left.

### **SAFETY PRECAUTIONS**

1. Read, study and understand all instructions and precautions. Failure to do so may result in personal injury and/or property damage.
2. Load should not exceed rated capacity for this lift: 1,500lbs.
3. Maintain a safe, clean working environment. Work area should be clutter free, clean, and dry.
4. Keep children and bystanders away from work area. Do not let children operate or play on lift.
5. Use this lift only for the work it is intended. Do not use this product for an application for which it was not designed. Misuse can lead to personal injury and/or property damage.
6. Wear proper attire when using this lift. Do not wear loose fitting clothing; long sleeves should be rolled up; hair should be worn in a protective covering to prevent long hair from becoming caught in moving parts.
7. Use proper safety attire. Wear safety glasses and fitted protective gloves when using this lift.

8. Do not use this product if worn or damaged. Examine for structural cracks, bends or other signs of damage. Check all hoses and connections before use to insure they are in good working condition.
9. Keep lift clean and dry for longevity of product.
10. Do not use if under the influence of drugs or alcohol. Must be alert at all times when using heavy lift equipment.
11. Keep hands, feet and other extremities away from moving parts. Remain clean of the lift when raising or lowering.
12. Never operate the lift with someone on it.



## WARNING



The warnings, precautions and instructions in this manual cannot cover all possible conditions and situations that may occur. The operator must understand that the operator must supply common sense and examine caution factors when using this product to determine safety in all circumstances being used.