



## IMPORTANT SAFETY INSTRUCTIONS SAVE THIS MANUAL

PLEASE READ THE ENTIRE CONTENTS OF THIS MANUAL PRIOR TO INSTALLATION AND OPERATION. BY PROCEEDING WITH THIS HEAVY DUTY WORK BENCH ASSEMBLY YOU AGREE THAT YOU FULLY UNDERSTAND AND COMPREHEND THE FULL CONTENTS OF THIS DOCUMENT. FORWARD THIS IMPORTANT MANUAL TO ALL OPERATORS.

12-24-2015  
P/N 5900932

### OPERATION AND ASSEMBLY MANUAL

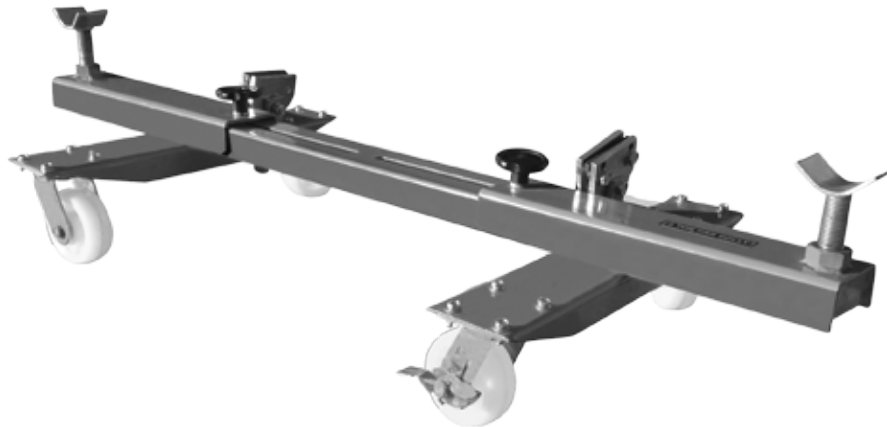
#### VEHICLE DOLLY

MODEL  
RCD-2V

#### READ FIRST



Do not operate this machine until you read and understand all the dangers, warnings and cautions in this manual.



#### RECEIVING

The shipment should be thoroughly inspected as soon as it is received. The signed Bill of Lading is acknowledgement by the shipping carrier as receipt of this product as listed in your invoice as being in a good condition of shipment. If any of these goods listed on this Bill of Lading are missing or damaged, do not accept merchandise until the shipping carrier makes a notation on the freight bill of the missing or damaged goods. Do this for your own protection.

#### BE SAFE

Your new work bench was designed and built with safety in mind. However, your overall safety can be increased with proper training and thoughtful operation on the part of the operator. DO NOT operate or repair this equipment without reading this manual and the important safety instructions shown inside. Keep this operation manual near the alignment system at all times. Make sure that ALL USERS read and understand this manual.



1645 Lemonwood Dr.  
Santa Paula, CA. 93060, USA  
Toll Free 1-800-253-2363  
Tel: 1-805-933-9970  
Fax: 1-805-933-9160  
[www.bendpak.com](http://www.bendpak.com)

## PLEASE READ ENTIRE MANUAL PRIOR TO ASSEMBLY

To keep vehicle dolly and user safety, the responsibility of the owner is to read and follow assembly and operation instructions:

- ◆ Carefully check vehicle dolly for correct initial function.
- ◆ Read and follow the safety instructions.
- ◆ Make certain all operators are properly trained, know how to safely and correctly operate the unit.
- ◆ Carefully inspect the unit on a regular basis and perform all maintenance as required.
- ◆ Service and maintain the unit only with authorized or approved replacement parts.
- ◆ Keep all instructions permanently with the unit and all decals on the unit clean and visible.

### BEFORE YOU BEGIN

#### Receiving:

The shipment should be thoroughly inspected as soon as it is received. The signed bill of lading is acknowledgement by the carrier of receipt in good condition of shipment covered by your invoice. If any of the goods called for on this bill of lading are shorted or damaged, do not accept them until the carrier makes a notation on the freight bill of the shorted or damaged goods. Do this for your own protection.

**NOTIFY THE CARRIER AT ONCE** if any hidden loss or damage is discovered after receipt and request the carrier to make an inspection. If the carrier will not do so, prepare a signed statement to the effect that you have notified the carrier (on a specific date) and that the carrier has failed to comply with your request. Support your claim with copies of the bill of lading, freight bill, invoice, and photographs, if available. Our willingness to assist in helping you process your claim does not make BendPak responsible for collection of claims or replacement of lost or damaged materials.

### IMPORTANT SAFETY TIPS

Be sure to read all warning labels and instruction manual prior to operation of this equipment.

- ◆ Keep hands and body clear of all pinch points. Avoid moving parts when in operation.
- ◆ Do not use beyond the rated capacity.
- ◆ Use only on hard flat surfaces.
- ◆ The vehicle dolly is limited for the use of supporting and moving partly dismantled or badly damaged vehicles only.

- ◆ Do not use if you detect any structural failure. Ensure no components/parts are missing or damaged.
- ◆ Ensure the vehicle engine is switched off and there is no people in the vehicle.
- ◆ Keep work area clean. All visitors especially children should strictly be kept away from the work area.
- ◆ No modifications should be made to equipment.

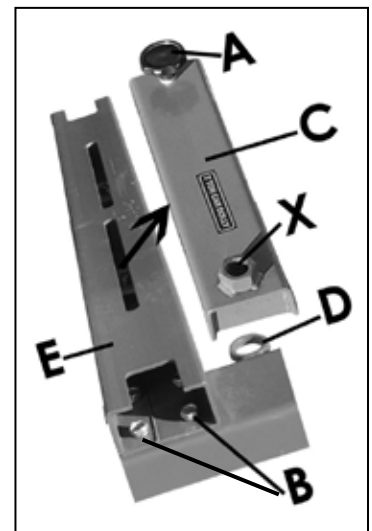
SPECIFICATIONS	
Capacity	4400 lbs. (2 Ton)
Min. Height	9-27/32" (250mm)
Max. Height	12-13/64" (310mm)
Min. Width	40-3/4" (1035mm)
Max. Width	56-19/64" (1430mm)
Length	23-5/8" (600mm)

### TECHNICAL FEATURES

Heavy duty steel frame suitable for supporting up to 2 Ton. Crutches, clamps and extension arms can be adjusted for different height and width.

### ASSEMBLING

1. Take out the parts and components from the box. Check all the listed items with the packing list provided to make sure all the parts are not missing.
2. Follow the parts breakdown drawing (See page 3) to assemble the casters and fasten all the bolts and nuts.
3. Assemble all four wheels with nuts, spring washer, washers and bolts. Ensure that the two locking wheels are at the same end.
4. Remove extension arm (C) from main beam by undoing knob (A) and lifting arm off.
5. Assemble main beam (E) to wheel frames by locking four bolts, spring washers, washers and nuts at each end (B).
6. Check all connections are tight and replace the extension arm (C) by screwing knob (A) into the holding plate set inside the frame of the main beam.
7. Screw the appropriate supports into the end of the extension arm at point (X) and place the unused supports in their storage eyes. (D).



## OPERATION

1. Adjust the arm and the clamp to the suitable position depending on different use.
2. Position the dolly supports under the vehicle manufacturer's recommended lifting point.
3. Using the clamps to correctly fit and tighten the support point.
4. Make sure no person and obstacles beneath and the

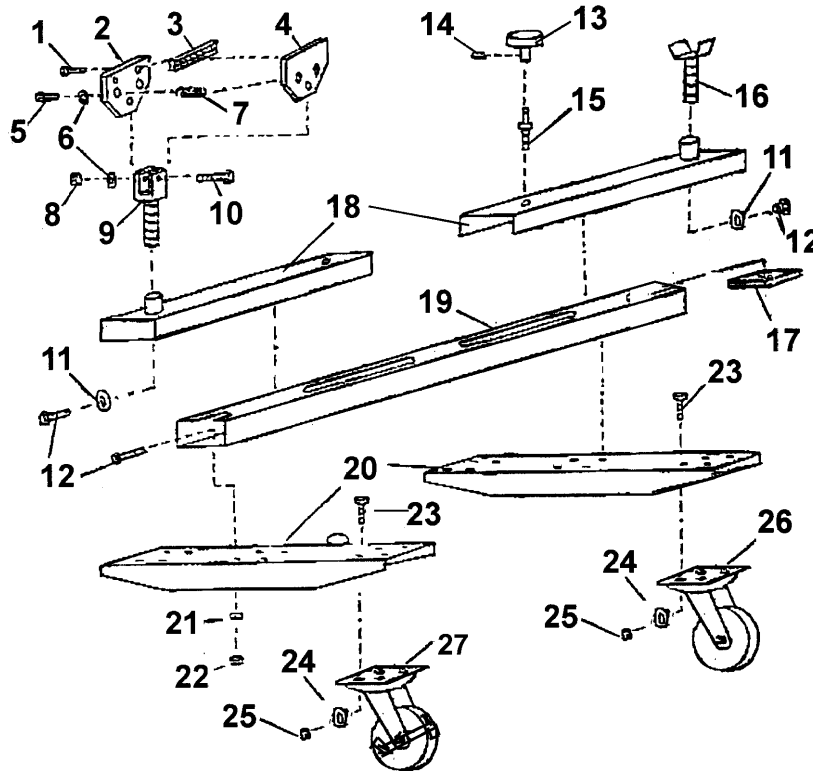
brakes are unlocked.

5. Roll the dolly into position and lock the caster brakes for safety.

## MAINTENANCE

1. All dolly linkage and moving joints require frequent lubrication. Any chassis grease and motor oil can be used.
2. The dolly should be stored in a place being well ventilated and moist-proof.

## PARTS BREAKDOWN



NO.	DESCRIPTION	QTY.	NO.	DESCRIPTION	QTY.
1	SCREW M6X10	4	15	SCREW	2
2	PRESSING BOARD	2	16	ADAPTOR	2
3	DEPRESSION BAR	2	17	BLOCK	2
4	PRESSING BOARD	2	18	EXTENSION ARM	2
5	BOLT M12X35	4	19	MAIN BEAM	1
6	WASHER 12	6	20	SUPPORT BEAM	2
7	SPRING	4	21	SPRING WASHER 10	8
8	NUT M12	2	22	NUT M10	8
9	BEARING POST	2	23	BOLT M8X20	16
10	BOLT M12X70	2	24	WASHER 8	16
11	WASHER 10	2	25	NUT M8	16
12	BOLT M10X25	10	26	CASTER	2
13	KNOB	2	27	CASTER W/ BRAKE	2
14	SPRING PIN	2			



**For Parts or Service Contact:**

BendPak Inc. / Ranger Products  
1645 Lemonwood Dr.  
Santa Paula, CA 93060

Tel: 1-805-933-9970  
Toll Free: 1-800-253-2363  
Fax: 1-800-933-9160

**[www.bendpak.com](http://www.bendpak.com)**