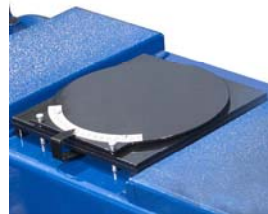
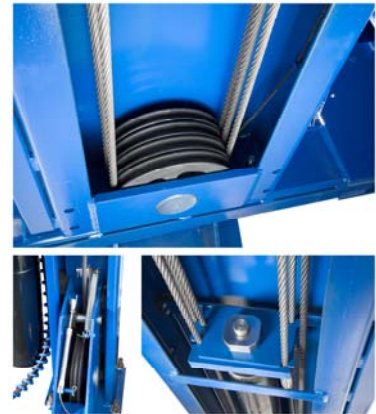


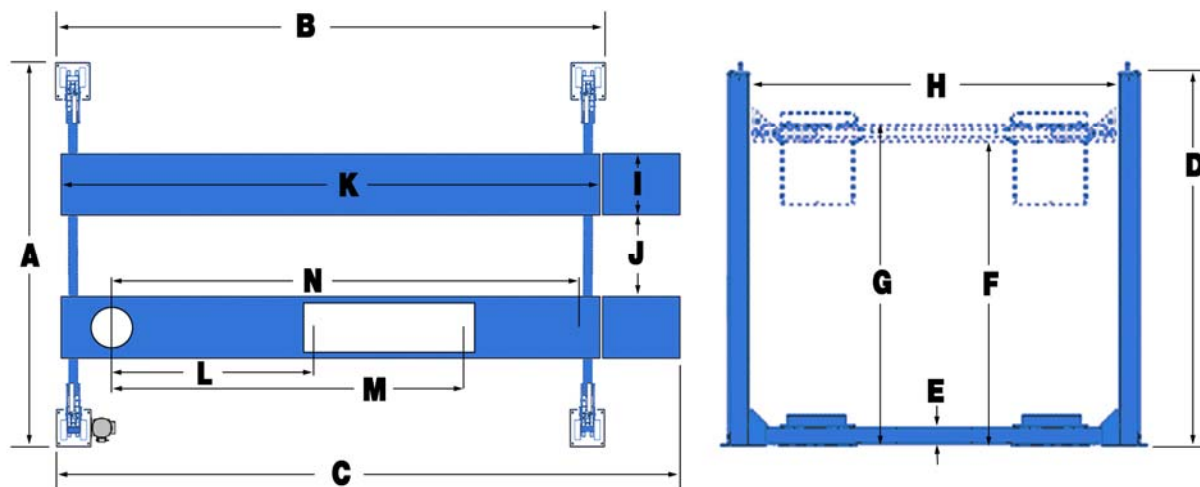


HD-Series Super-Duty Four Post Details



**Four-Post Lift**  
Model(s) HD-18A / HD-27A / HD-27XA / HD-35A / HD-35XA

- 18,000, 27,000 and 35,000-pound lifting capacity
- Runways include rail-kit for optional accessories
- Electric/hydraulic power system
- Heavy-duty turn plates included
- Integrated rear slip-plates
- Automatic leveling system
- Single hydraulic cylinder mounted underneath runway
- Internal "Anti-Sway" slider blocks in each column
- Features heavy-duty aircraft cable
- Oversized self-lubricating cable rollers
- Rugged 4" main sheave axles
- Multi-position safety locks in each column
- Multi-position , adjustable height safety locks in each column
- Ramps feature non-skid surface
- Push-button safety release
- Runways adjust for different tread widths
- Optional drive-thru ramps available
- Optional 9K, 12K, 15K-pound capacity rolling jacks available
- ETL Approved / Pending



MODEL	HD-18A	HD-27A	HD-27XA	HD-35A	HD-35XA
Lifting Capacity*	18,000 lbs. / 8165 Kg.	27,000 lbs. / 12,247 Kg.	27,000 lbs. / 12,247 Kg.	35,000 lbs. / 15,876 Kg.	35,000 lbs. / 15,876 Kg.
*Max Capacity / Front Axle	9,000 lbs. / 4082 Kg.	13,500 lbs. / 6,124 Kg.	13,500 lbs. / 6,124 Kg.	17,500 lbs. / 7,938 Kg.	17,500 lbs. / 7,938 Kg.
*Max Capacity / Rear Axle	9,000 lbs. / 4082 Kg.	13,500 lbs. / 6,124 Kg.	13,500 lbs. / 6,124 Kg.	17,500 lbs. / 7,938 Kg.	17,500 lbs. / 7,938 Kg.
A - Overall Width	154" / 3912 mm.	154" / 3912 mm.	154" / 3912 mm.	154" / 3912 mm.	154" / 3912 mm.
B - Outside Length	201" / 5105 mm.	257" / 6528 mm.	317" / 8052 mm.	257" / 6528 mm.	317" / 8052 mm.
C - Overall Length	241" / 6121 mm.	297" / 7544 mm.	357" / 9068 mm.	297" / 7544 mm.	357" / 9068 mm.
D - Height of Columns	93" / 2362 mm.	93" / 2362 mm.	93" / 2362 mm.	93" / 2362 mm.	93" / 2362 mm.
E - Min. Runway Height	10-1/2" / 267 mm.	10-1/2" / 267 mm.	10-1/2" / 267 mm.	10-1/2" / 267 mm.	10-1/2" / 267 mm.
F - Max. Rise	60" / 1524 mm.	60" / 1524 mm.	60" / 1524 mm.	60" / 1524 mm.	60" / 1524 mm.
G - Max. Lifting Height	70-1/2" / 1791 mm.	70-1/2" / 1791 mm.	70-1/2" / 1791 mm.	70-1/2" / 1791 mm.	70-1/2" / 1791 mm.
H - Width Between Columns	134" / 3404 mm.	134" / 3404 mm.	134" / 3404 mm.	134" / 3404 mm.	134" / 3404 mm.
I - Runway Width	22" / 559 mm.	22" / 559 mm.	22" / 559 mm.	28" / 711 mm.	28" / 711 mm.
J - Width Between Runways (*)	38" - 56" 965 mm. - 1422 mm.	38" - 56" 965 mm. - 1422 mm.	38" - 56" 965 mm. - 1422 mm.	36" - 47" 914 mm. - 1194 mm.	36" - 47" 914 mm. - 1194 mm.
K - Length of Runways	203" / 5156 mm.	263" / 6680 mm.	323" / 8204 mm.	263" / 6680 mm.	323" / 8204 mm.
L - Min. 4-Wheel Alignment (**)	83" / 2108 mm.	83" / 2108 mm.	83" / 2108 mm.	83" / 2108 mm.	83" / 2108 mm.
M - Max. 4-Wheel Alignment (**)	138" / 3505 mm.	138" / 3505 mm.	138" / 3505 mm.	138" / 3505 mm.	138" / 3505 mm.
N - Max 2-Wheel Alignment (**)	151" / 3835 mm.	211" / 5359 mm.	271" / 6883 mm.	211" / 5359 mm.	271" / 6883 mm.
Locking Positions	9	9	9	9	9
Lock Spacing	Every 6" / 152 mm.	Every 6" / 152 mm.	Every 6" / 152 mm.	Every 6" / 152 mm.	Every 6" / 152 mm.
Lifting Time	75 Seconds	75 Seconds	75 Seconds	75 Seconds	75 Seconds
Standard Motor (**)	220 VAC / 60 Hz. 1Ph.	220 VAC / 60 Hz. 1Ph.	220 VAC / 60 Hz. 1Ph.	220 VAC / 60 Hz. 1Ph.	220 VAC / 60 Hz. 1Ph.

\* This dimension may be limited with the addition of rolling jacks. See rolling jack specifications on separate page.

\*\* May vary depending on wheel size.

\*\*\* Special Voltages Available Upon Request.

The design, material and specifications are subject to change without notice.