

IMPORTANT SAFETY INSTRUCTIONS SAVE THESE INSTRUCTIONS



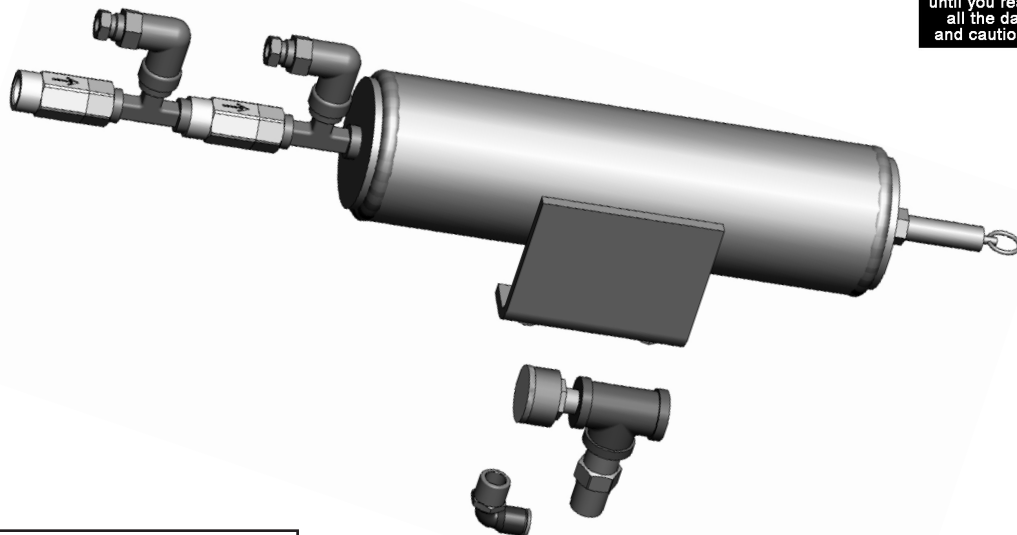
PLEASE READ THE ENTIRE CONTENTS OF THIS MANUAL PRIOR TO INSTALLATION AND OPERATION. BY PROCEEDING WITH LIFT INSTALLATION AND OPERATION YOU AGREE THAT YOU FULLY UNDERSTAND AND COMPREHEND THE FULL CONTENTS OF THIS MANUAL. FORWARD THIS MANUAL TO ALL OPERATORS. FAILURE TO OPERATE THIS EQUIPMENT AS DIRECTED MAY CAUSE INJURY OR DEATH.

REV D 10/22/2015
p/n 5900306

INSTALLATION AND OPERATION MANUAL

9" AIR BOTTLE KIT

OPTION FOR BENDPAK 4 -POST LIFTS



READ FIRST



Do not operate this machine until you read and understand all the dangers, warnings and cautions in this manual.

Keep this operation manual near the machine at all times. Make sure that ALL USERS read this manual.

RECEIVING

The shipment should be thoroughly inspected as soon as it is received. The signed Bill of Lading is acknowledgement by the shipping carrier as receipt of this product as listed in your invoice as being in a good condition of shipment. If any of these goods listed on this Bill of Lading are missing or damaged, do not accept goods until the shipping carrier makes a notation on the freight bill of the missing or damaged goods. Do this for your own protection.

BE SAFE

Your new lift was designed and built with safety in mind. However, your overall safety can be increased with proper training and thoughtful operation on the part of the operator. DO NOT operate or repair this equipment without reading this manual and the important safety instructions shown inside. Keep this operation manual near the lift at all times. Make sure that ALL USERS read and understand this manual.



1645 Lemonwood Dr.
Santa Paula, CA. 93060, USA
Toll Free 1-800-253-2363
Tel: 1-805-933-9970
www.bendpak.com

IMPORTANT NOTICE

Do not attempt to install this kit if you have never been trained on basic automotive installation procedures. Never attempt to lift components without proper lifting tools such as a forklift or cranes. Stay clear of any moving parts that can fall and cause injury. These instructions must be followed to ensure proper installation and operation of your lift. Failure to comply with these instructions can result in serious bodily harm and void product warranty. Manufacturer will assume no liability for loss or damage of any kind, expressed or implied resulting from improper installation or use of this product.

PLEASE READ ENTIRE MANUAL PRIOR TO INSTALLATION

DEFINITIONS OF HAZARD LEVELS

Identify the hazard levels used in this manual with the following definitions and signal words:



Watch for this symbol as it means: Immediate hazards which will result in severe personal injury or death.



Watch for this symbol as it means: Hazards or unsafe practices which could result in severe personal injury or death.



Watch for this symbol as it means: Hazards or unsafe practices which may result in minor personal injury, product or property damage.

OWNER'S RESPONSIBILITY

To maintain the lift and user safety, the responsibility of the owner is to read and follow these instructions:

- ◆ Follow all installation and operation instructions.
- ◆ Make sure installation conforms to all applicable Local, State, and Federal Codes, Rules, and Regulations; such as State and Federal OSHA Regulations and Electrical Codes.

- ◆ Carefully check the lift for correct initial function.
- ◆ Read and follow the safety instructions. Keep them readily available for machine operators.
- ◆ Make certain all operators are properly trained, know how to safely and correctly operate the unit, and are properly supervised.
- ◆ Allow unit operation only with all parts in place and operating safely.
- ◆ Carefully inspect the unit on a regular basis and perform all maintenance as required.
- ◆ Service and maintain the unit only with authorized or approved replacement parts.
- ◆ Keep all instructions permanently with the unit and all decals on the unit clean and visible.



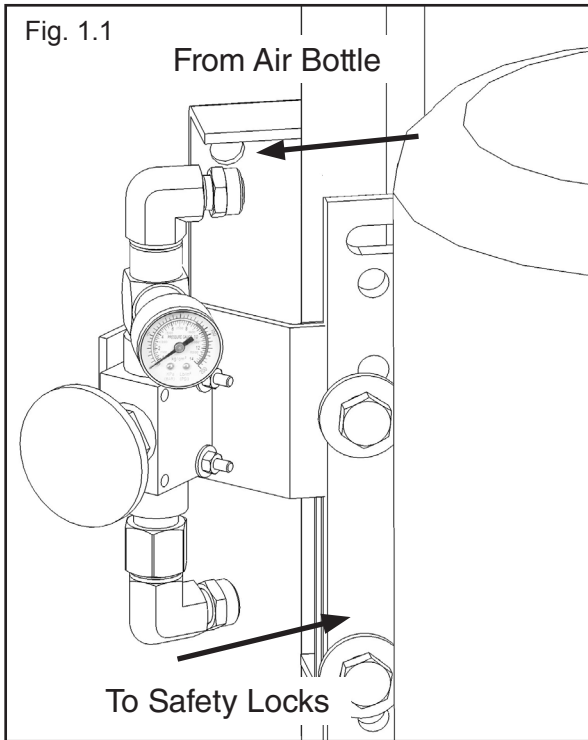
REFER TO THE MANUAL THAT CAME WITH THE LIFT FOR PROPER SAFETY AND OPERATING INSTRUCTIONS. READ, FOLLOW AND UNDERSTAND THE OPERATING MANUAL BEFORE OPERATING ANY AUTOMOTIVE LIFT.



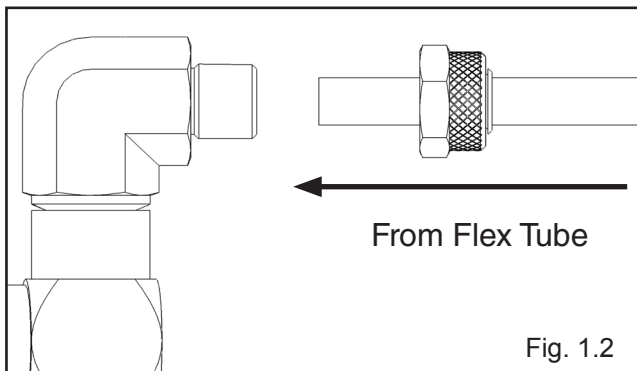
DO NOT PROCEED or go near the lift work area unless visual confirmation is made of ALL Safety Locks. ALL locks MUST be engaged before proceeding. Failure to comply with these instructions may result in severe personal injury or death.

1. Raise lift to about 24" off the ground and rest on the first safety lock position.
2. Ensure that the lift is resting on the safeties.

3. If necessary disconnect the existing air line from the Push Button Air Valve. Install the Pressure Gauge between the Compression Fitting and the Push Button Air Valve. Use Teflon tape on only the NPT threads of the fittings. (See Fig 1.1)

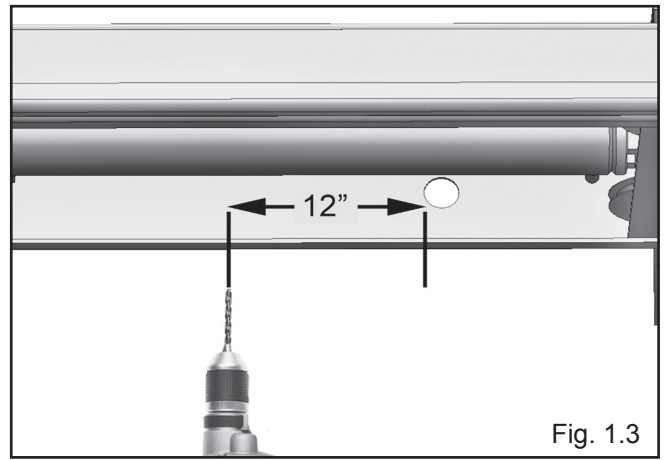


4. Remove the captive nut on the Compression Fittings on the Pressure Gauge Assembly. Insert the Plastic Air line through the alignment sleeve and into the end of the fitting until it bottoms out. Then tighten the nut on the fitting. (See Fig 1.2) Repeat with the Compression Fitting installed on the Push Button Air Valve.

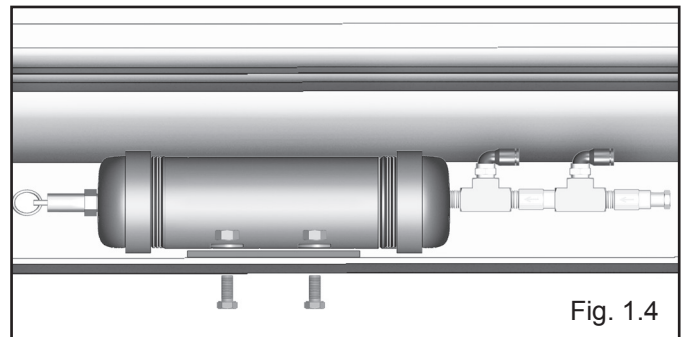


5. Route the Plastic Air line from the fittings through the Flex Tube on the lift to where the Air Bottle will be installed.

6. The Bottle Assembly will be installed on the underside of the Powerside Runway near the Flex Tube attaches to the ramp. Measure 12" (305mm) from the hole in the ramp and drill two holes in the short flange of the Powerside Runway matching the Air Bottle Bracket. Deburr the holes after drilling. (See Fig 1.3)



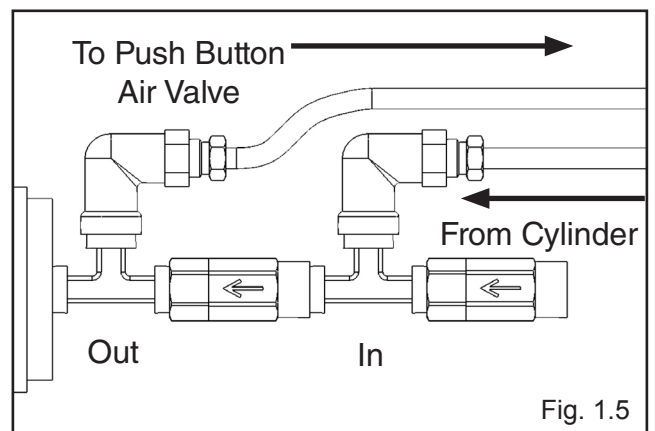
7. Mount the Bottle Bracket using the two Bolts, Nuts and Washers. (See Fig 1.4)



8. Carefully measure the distance from the Hydraulic Cylinder to the IN fitting of the Air Bottle before cutting the Air Line.

9. Attach the Air Line from the Dry Side of the Cylinder to the **IN** fitting at the head of the Air Bottle assembly. (See Fig 1.5)

10. Attach the Airline from the Push Button Air Switch to the **OUT** Fitting in the middle of the Bottle Assembly. (See Fig 1.5)



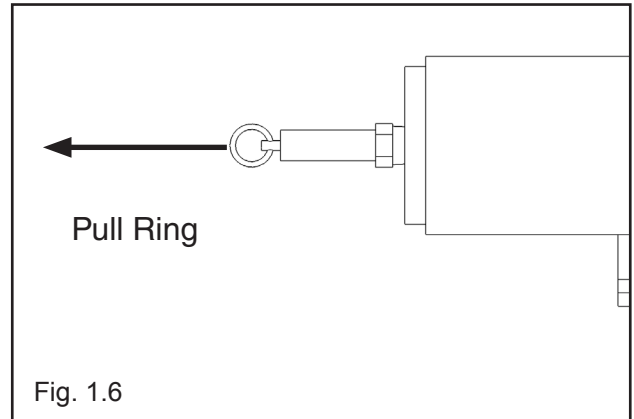
11. Raise the lift up to the highest position. On the way up monitor the Pressure Gauge on the Push Button Air Switch to see if pressure is building. If you detect a leak or no pressure is building. **STOP** raising the lift and check all Air Line Fittings for leaks.

12. When you are sure the air pressure is building. Raise the lift to the highest position. The air pressure should have increased enough to retract the Safeties when the Push Button Air Switch is pressed.

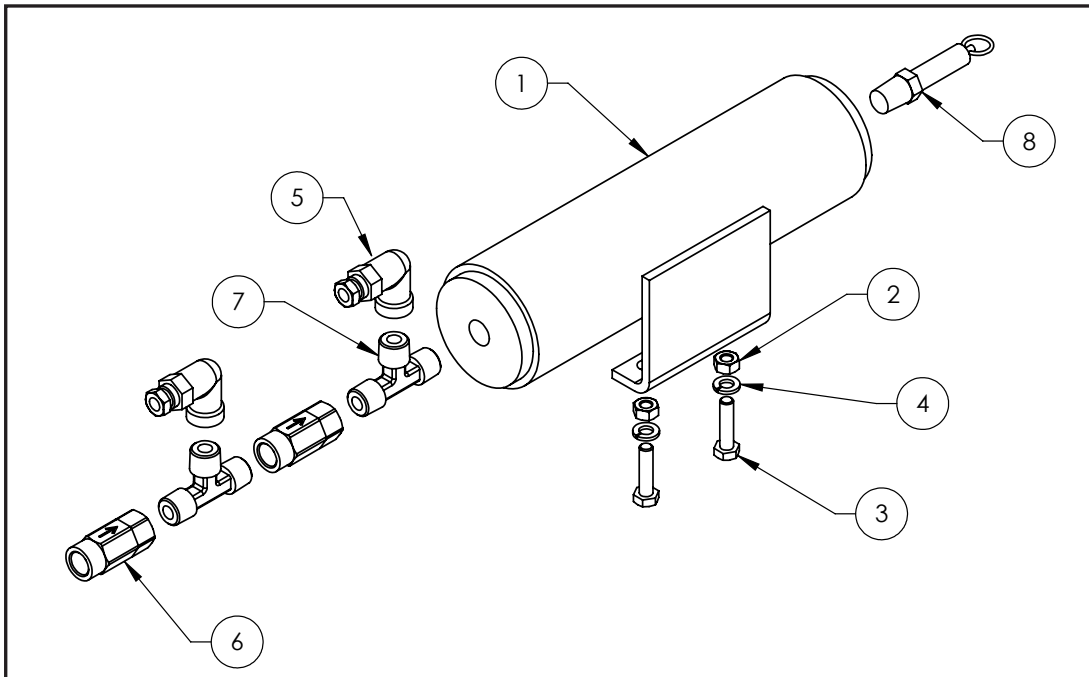


13. Lower the lift to the desire height safeties. (Read and Follow all lowering precautions and instructions that came with the lift.)

14. If it becomes necessary to depressurize the system, pull on the Pull Ring attached to the Release Valve. (See Fig. 1.6)



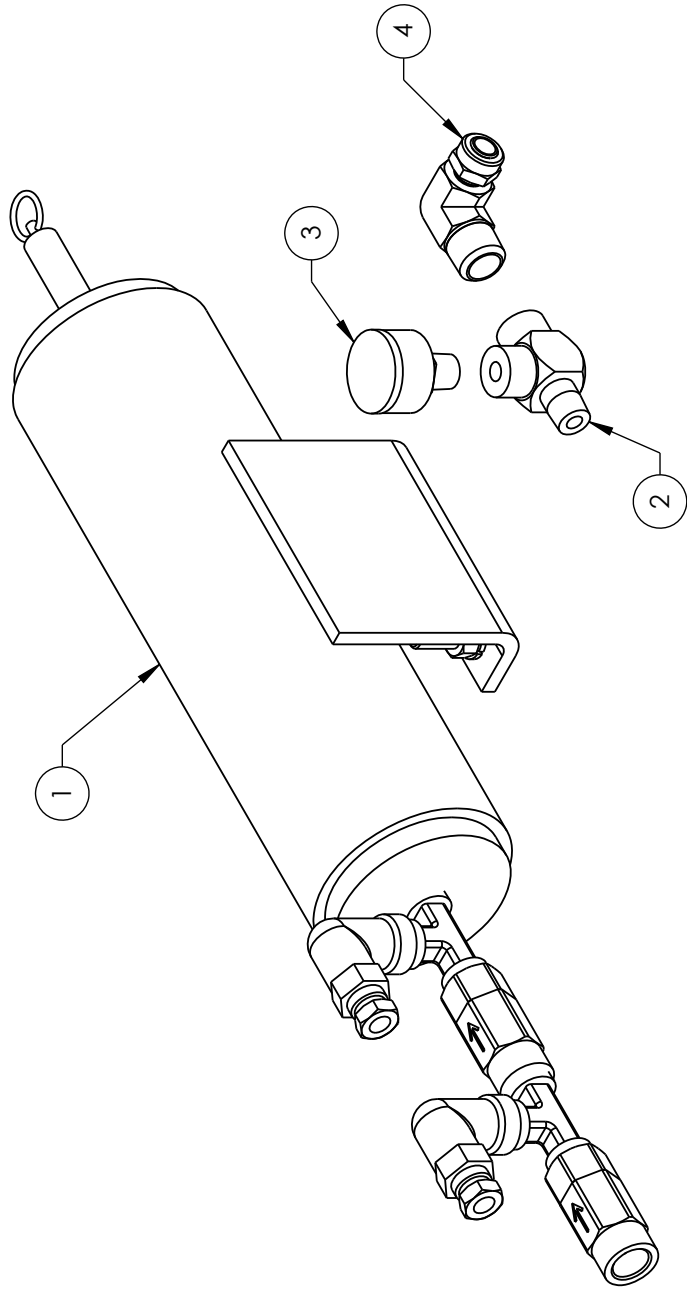
AIR BOTTLE KIT PARTS





NOTE: UNLESS OTHERWISE SPECIFIED.
 1. SEE SHIPPING INSTRUCTIONS FOR FINAL
 2. ASSEMBLE ITEMS AS SHOWN

ITEM NO	PART NUMBER	DESCRIPTION	QTY	REV
1	5600339	AIR COMPRESSOR BOTTLE PIPE NIPPLE WELDMENT	1	B
2	5535112	NUT M6 x 1.0	2	-
3	5530756	HHB M6 x 1 x 25	2	-
4	5545026	WASHER M6 x Ø12 SL	2	-
5	5550088	FIG ELB -04 COMP x -04 F NPT	2	-
6	5550169	FIG CV -04 F NPT x -04 F NPT	2	-
7	5550171	FIG TEE -04 NPT x -04 NPT x -04 NPT	2	-
8	5550172	FIG PRV -04 NPT	1	-

DO NOT SCALE DRAWING		NAME	DATE
DIMENSIONS ARE IN MM		DRAWN AC	11/04/2009
CHECKED		MM	03/21/2014
THIRD ANGLE PROJECTION			
MATERIAL: ---	PROPRIETARY AND CONFIDENTIAL THE INFORMATION CONTAINED IN THIS DRAWING IS THE SOLE PROPERTY OF BENDPAK INC. ANY REPRODUCTION IN PART OR AS A WHOLE WITHOUT THE WRITTEN PERMISSION OF BENDPAK INC. IS PROHIBITED.		
SIZE: ---			
BendPak 1645 LEMONWOOD DR. SANTA PAULA, CA 93060		TITLE: 9" AIR COMPRESSOR BOTTLE ASSEMBLY	
SIZE DWG. NO.	REV		
A	5215326	C	
SCALE: 1:3			SHEET 1 OF 1



ITEM NO	PART NUMBER	DESCRIPTION	QTY	REV
1	5215326	9" AIR COMPRESSOR BOTTLE ASSEMBLY	1	C
2	5550084	FIG TEE -02 NPT X -02 F NPT	1	-
3	5550140	1/8" NPT 150 PSI GAUGE	1	-
4	5550083	FIG ELB -04 COMP X -04 NPT	1	-

DO NOT SCALE DRAWING	NAME	DATE
DIMENSIONS ARE IN MM	AC	10/27/2009
	CHECKED	
	THIRD ANGLE PROJECTION	
MATERIAL:		
SIZE:	<small>PROPRIETARY AND CONFIDENTIAL</small> <small>THE INFORMATION CONTAINED IN THIS DRAWING IS THE PROPERTY OF BENDPAK, INC. AND IS NOT TO BE REPRODUCED OR TRANSMITTED IN ANY FORM OR BY ANY MEANS, WITHOUT THE WRITTEN PERMISSION OF BENDPAK, INC. IS PROHIBITED.</small>	

BendPak <small>PROFESSIONAL EQUIPMENT</small> 1645 LEMONWOOD DR. SANTA PAULA, CA 93060	
TITLE: 9" AIR COMPRESSOR BOTTLE KIT	
SIZE DWG. NO.	REV
A 5215306	D
SCALE: 1:2	SHEET 1 OF 1

NOTE: UNLESS OTHERWISE SPECIFIED.
 1. SEE SHIPPING INSTRUCTIONS FOR FINAL PACKAGING
 2. PRESSURE TEST AIR BOTTLE ASSEMBLY 300% TO 450 PSI. (NO LEAKS)



The Benchmark of Quality

For Parts Or Service Contact:

**BendPak Inc. / Ranger Products
1645 Lemonwood Dr.
Santa Paula, CA. 93060**

**Tel: 1-805-933-9970
Toll Free: 1-800-253-2363
Fax: 1-805-933-9160**

www.bendpak.com

En Español: www.bendpak.com.mx

p/n 5900306

